

Troubleshooting

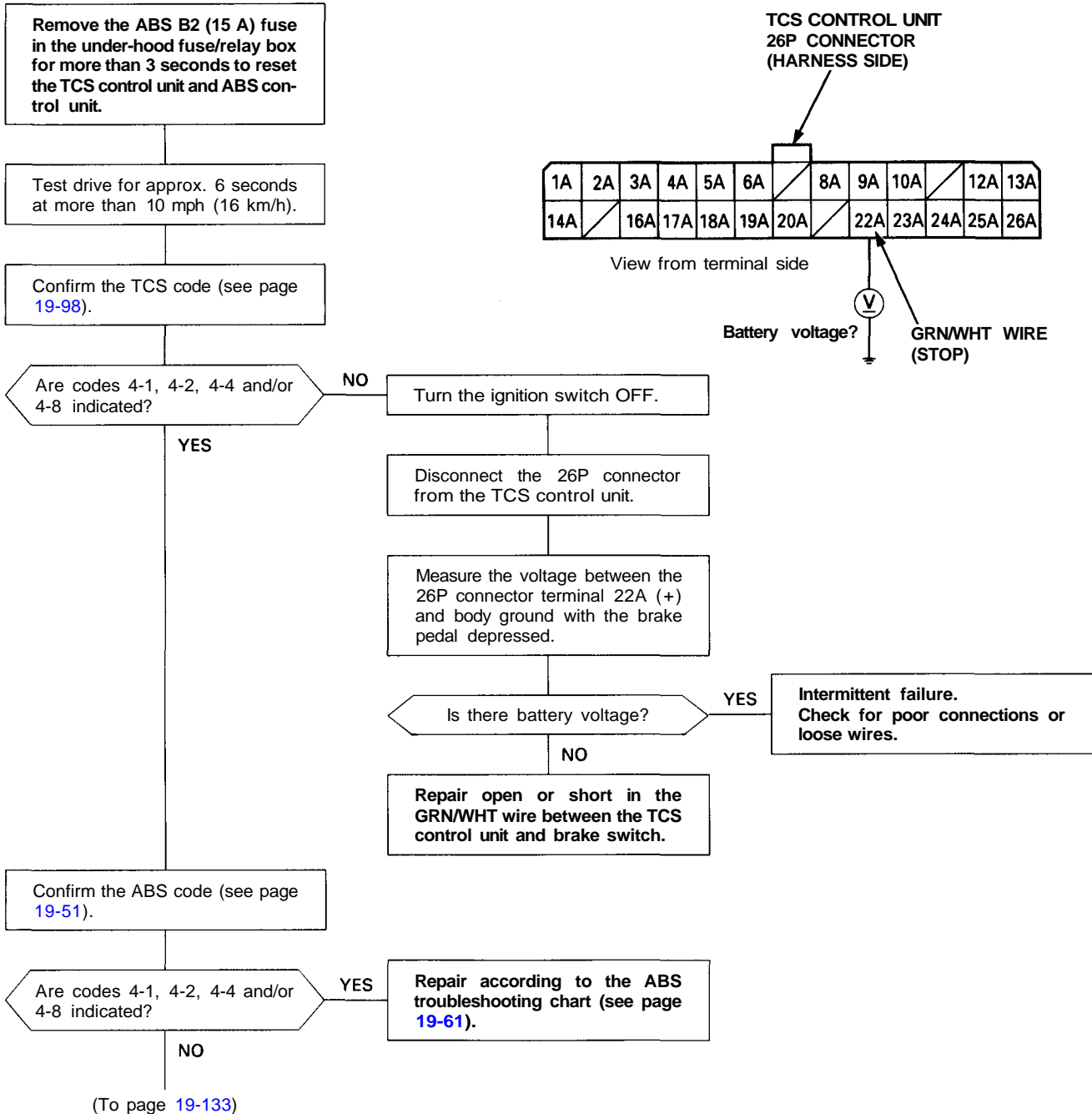
Individual Wheel Sensors

Diagnostic Trouble Code (DTC) 4-1: Right front wheel sensor
4-2: Left front wheel sensor

4-4: Right rear wheel sensor
4-8: Left rear wheel sensor

NOTE:

- The TCS indicator light comes on if any wheel speed signal from the ABS control unit stops for more than three seconds when either the left or right rear wheel speed is 10 mph (16 km/h) or more.
- If the wheel speed signals from the ABS control unit are abnormal, the TCS control unit makes the TC FC signal to the ECM or PCM 0 V. The ECM or PCM then indicates PGM-FI system code 36. After the repair is completed, reset the ECM or PCM (see [section 11](#)).





(From page 19-132)

Measure the voltage between the TCS control unit 16P connector terminals (+) and body ground:
No. 8B: Right front
No. 6B: Left front
No. 4B: Right rear
No. 2B: Left rear

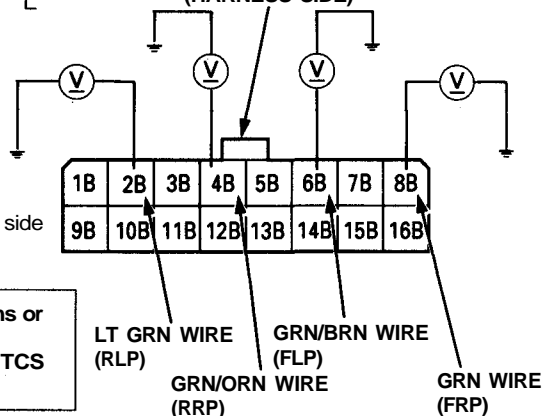
NOTE:

- Use the 10 V range or a similar range in the analog tester.
- Confirm that the analog tester needle swings to approx. 2 V.



View from terminal side

TCS CONTROL UNIT
16P CONNECTOR
(HARNESS SIDE)



Is there 0 V when the wheel is stopped and approx. 2 V when the wheel is rotated by hand.

YES

- Check for poor connections or loose wires.
- Substitute a known-good TCS control unit and recheck.

NO

Turn the ignition switch OFF.

Disconnect the 14P connector from the ABS control unit.

Turn the ignition switch ON.

Measure the voltage between the TCS control unit 16P connector terminals (+) and body ground:
No. 8B: Right front
No. 6B: Left front
No. 4B: Right rear
No. 2B: Left rear

Is there approx. 5 V?

NO

Turn the ignition switch OFF.

YES

Turn the ignition switch OFF.

Disconnect the 16P connector from the TCS control unit.

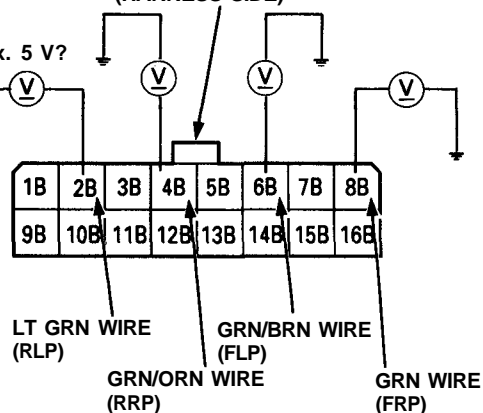
(To page 19-134)

(To page 19-134)

TCS CONTROL UNIT
16P CONNECTOR
(HARNESS SIDE)

Approx. 5 V?

View from terminal side



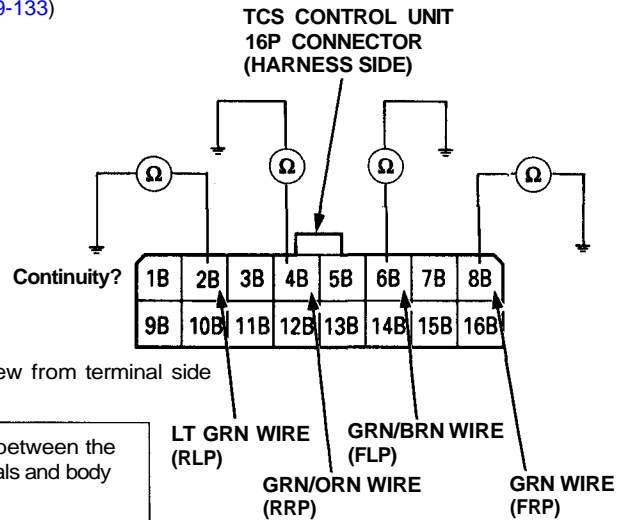
(cont'd)

Troubleshooting

Individual Wheel Sensors (cont'd)

(From page 19-133)

(From page 19-133)



Check for continuity between the 16P connector terminals and body ground:
No. 8B: Right front
No. 6B: Left front
No. 4B: Right rear
No. 2B: Left rear

Is there continuity?

NO

- Check for poor connections or loose wires.
- Substitute a known-good TCS control unit and recheck.

YES

Repair short in wire between the TCS control unit and ABS control unit:
GRN: Right front
GRN/BRN: Left front
GRN/ORN: Right rear
LT GRN: Left rear

Measure the voltage between the ABS control unit 14P connector terminals (+) and body ground:
No. 5: Left front
No. 6: Right front
No. 13: Right rear
No. 14: Left rear

Is there approx. 5 V?

YES

- Check for poor connections or loose wires.
- Substitute a known-good ABS control unit and recheck.

NO

Repair open in wire between the TCS control unit and ABS control unit:
GRN: Right front
GRN/BRN: Left front
GRN/ORN: Right rear
LT GRN: Left rear

